

DIMENSIONS (in.)					
No. OF PINS	A	B	C	D	Insulator Material
15	0.665	0.984	1.213	0.090	PA9T
26	0.994	1.311	1.543	0.090	PA9T
44	1.533	1.852	2.089	0.090	PA9T

DIMENSIONS (mm)					
No. OF PINS	A	B	C	D	Insulator Material
15	16.90	25.00	30.80	2.29	PA9T
26	25.25	33.30	39.20	2.29	PA9T
44	38.95	47.05	53.05	2.29	PA9T

MEETS IP67 STANDARDS
(SEE PAGE 3 FOR SEALING DETAILS)

MATERIALS AND FINISH:

SHELL: STEEL MATERIAL, NICKEL FINISH
INSULATOR: PA9T, UL 94V-0 RATED, BLACK (PROCESS TEMP 260°C)
CONTACT MATERIAL: BRASS
CONTACT FINISH: SEE PLATING PART NUMBER KEY BELOW
SEAL MATERIAL: F08 FLEXIBLE ADHESIVE

ELECTRICAL:

CONTACT CURRENT RATING: 3 AMPS
CONTACT RESISTANCE: 10 mOHMS Max.
DIELECTRIC WITHSTANDING VOLTAGE: 1,000 VAC Min.
INSULATION RESISTANCE: 5 GOHMS Min.
TEMPERATURE RATING: -55° ~ +125° C

780-M YY-1 1 3 R YY 1

SERIES
MACHINED CONTACTS
POSITION
15
26
44
GENDER
1 = MALE
TERMINATION
1 = VERTICAL DIP
SHELL PLATING
3 = NICKEL
HARDWARE
00 = NO HARDWARE, $\varnothing .120$ " HOLE
01 = 0.098" CLINCH NUT (BOARD SIDE)
05 = 0.237" BOARD LOCK (BOARD SIDE)
CONTACT PLATING
1 = GOLD FLASH, ENTIRE CONTACT
2 = 30 MICRO INCH GOLD
3 = 50 MICRO INCH GOLD

RoHS COMPLIANT



THESE DRAWINGS AND SPECIFICATIONS ARE THE PROPERTY OF NorComp AND SHALL NOT BE REPRODUCED, COPIED OR USED AS THE BASIS FOR THE MANUFACTURE OR SALE OF APPARATUS WITHOUT WRITTEN PERMISSION.

DRAWN:

J. KADEL

DATE:

08/03/2018

UNITS = INCHES [MM]

DO NOT SCALE FROM DRAWING

NorComp

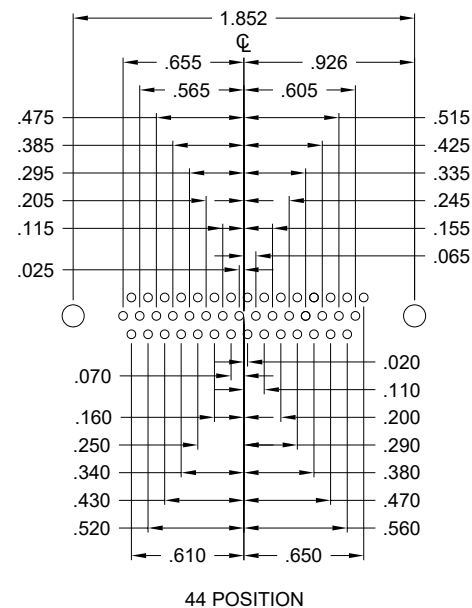
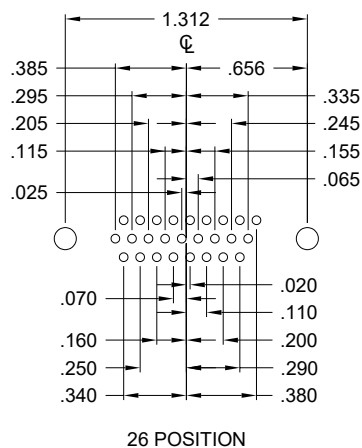
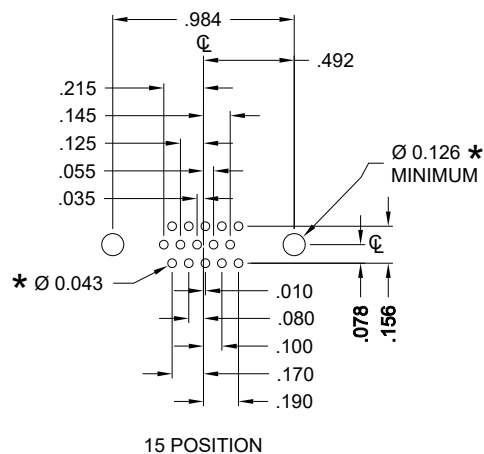
SCALE:
NTS

SHEET OF
1 4

REV
17

DWG NO.

780-MYY-113RYY1



HOLE PATTERN SHOWN
ARE FOR MALE

UNITS = inch

* TYP.
SUGGESTED SIZE
MAY NOT BE SUITABLE FOR ALL APPLICATIONS

RoHS COMPLIANT



THESE DRAWINGS AND SPECIFICATIONS ARE THE PROPERTY OF NorComp AND SHALL NOT BE REPRODUCED, COPIED OR USED AS THE BASIS FOR THE MANUFACTURE OR SALE OF APPARATUS WITHOUT WRITTEN PERMISSION.

DRAWN:

J. KADEL

DATE:

08/03/2018

NorComp

DO NOT SCALE FROM DRAWING

SCALE:

NTS

SHEET

OF

2

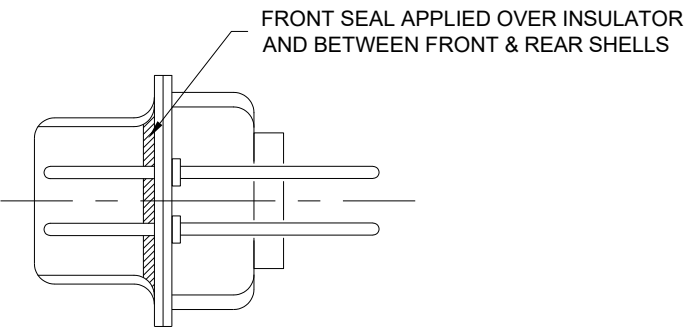
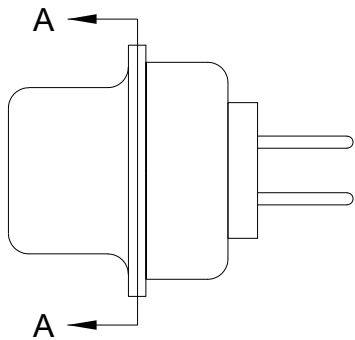
4

REV

17

DWG NO.

780-MYY-113RYY1



DETAIL A-A

RoHS COMPLIANT

DO NOT SCALE FROM DRAWING



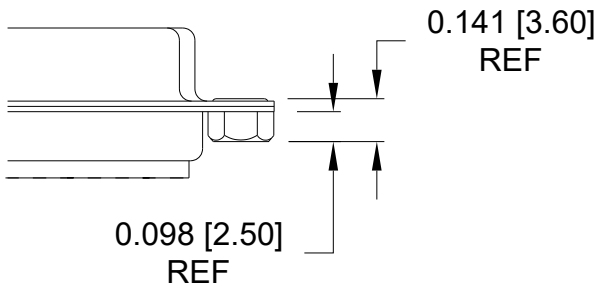
THESE DRAWINGS AND SPECIFICATIONS ARE THE PROPERTY OF NorComp AND SHALL NOT BE REPRODUCED, COPIED OR USED AS THE BASIS FOR THE MANUFACTURE OR SALE OF APPARATUS WITHOUT WRITTEN PERMISSION.	DRAWN: J. KADEL
	DATE: 08/03/2018



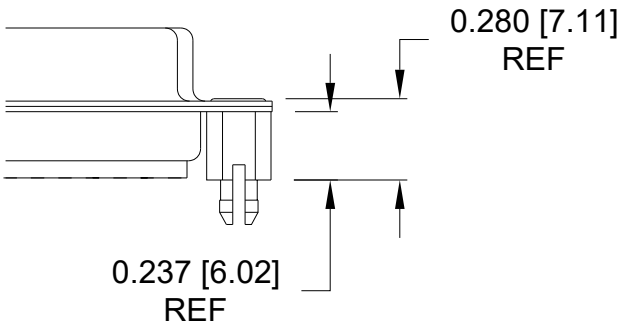
SCALE: NTS	SHEET 3 OF 4	REV 17
DWG NO. 780-MYY-113RYY1		

ALL CLINCH-NUTS ARE 4-40 INTERNAL THREADS

01X 0.098" (BOARD SIDE)



05X 0.237" (BOARD SIDE)



RoHS COMPLIANT



THESE DRAWINGS AND SPECIFICATIONS ARE THE PROPERTY OF NorComp AND SHALL NOT BE REPRODUCED, COPIED OR USED AS THE BASIS FOR THE MANUFACTURE OR SALE OF APPARATUS WITHOUT WRITTEN PERMISSION.

DRAWN:
J. KADEL

DATE:
08/03/2018

UNITS = INCHES [MM] DO NOT SCALE FROM DRAWING

NorComp

SCALE:
NTS

SHEET OF
4 4

REV
17

DWG NO. 780-MYY-113RYY1

Mouser Electronics

Authorized Distributor

Click to View Pricing, Inventory, Delivery & Lifecycle Information:

[NorComp:](#)

[780-M15-113R001](#) [780-M26-113R001](#) [780-M44-113R001](#) [780-M15-113R051](#) [780-M15-113R011](#) [780-M26-113R011](#) [780-M26-113R051](#) [780-M44-113R011](#) [780-M44-113R051](#)